

INSTALLATION INSTRUCTIONS

DESCRIPTION: Universal Stay Kit
PART NUMBER: B74-F34A0-V0
MODEL: '18~ XMAX



⚠ WARNING

Please read and understand these instructions completely before installation to avoid possible injury, or damage to the accessory or vehicle.

- Do not carry more than 2.2 lb (1.0 kilos) on the Universal Stay Kit.

NOTICE:

This installation requires a torque wrench

WARRANTY INFORMATION:

In the United States, see your authorized Yamaha dealer for a copy of the Yamaha Genuine Parts and Accessories Limited Warranty.

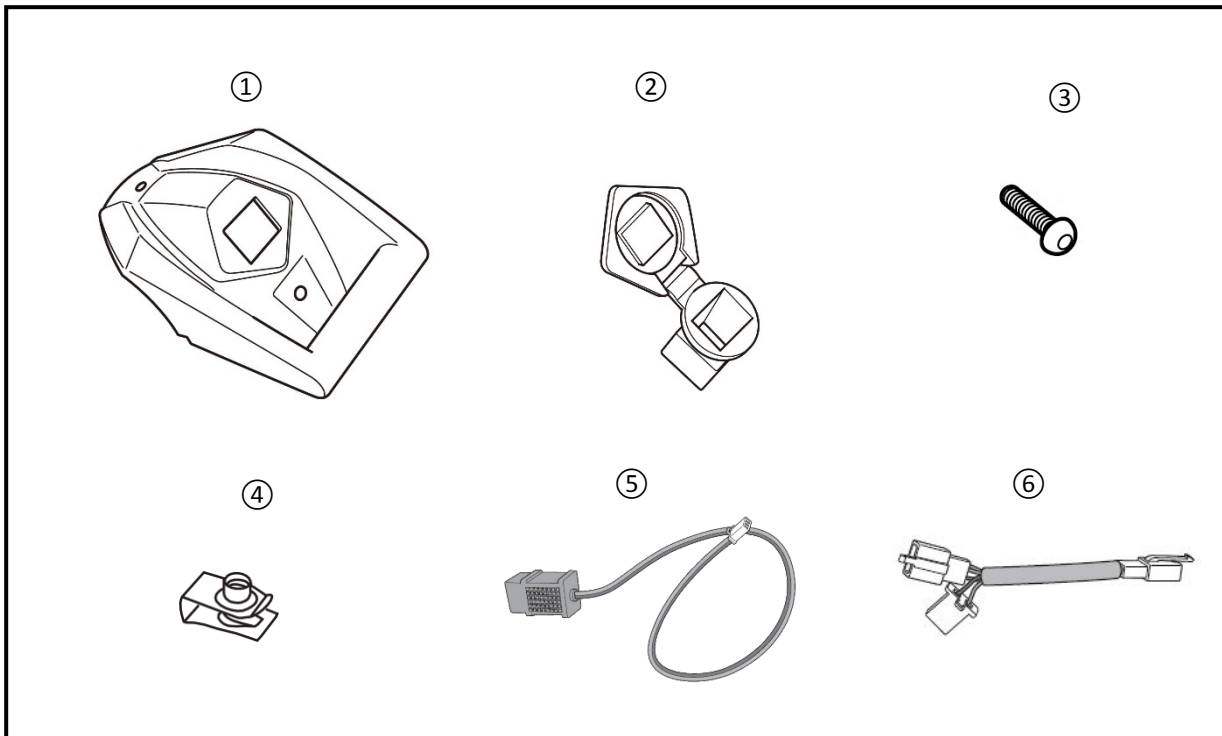
DEALER OR INSTALLER:

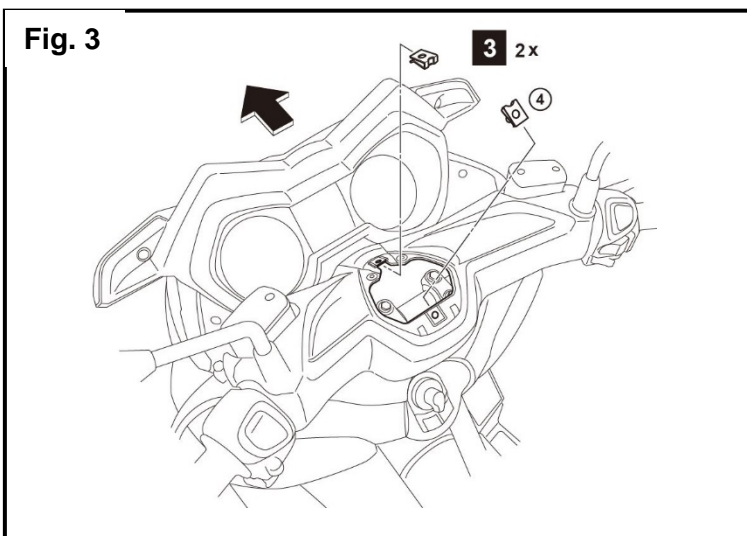
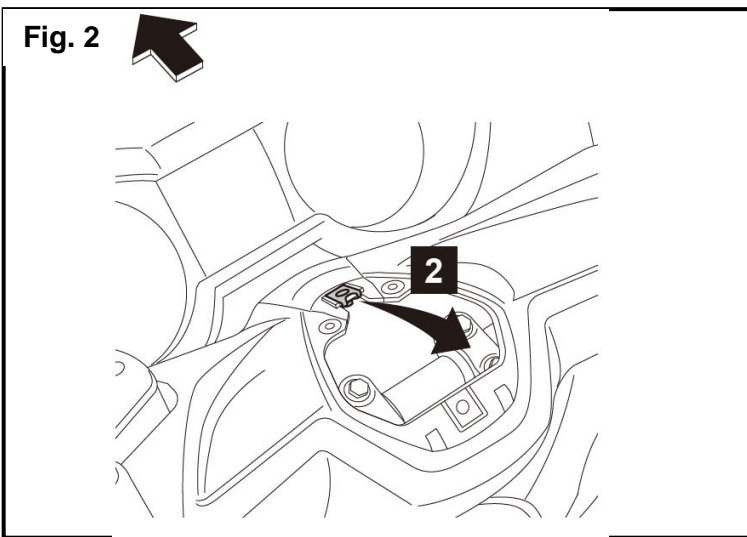
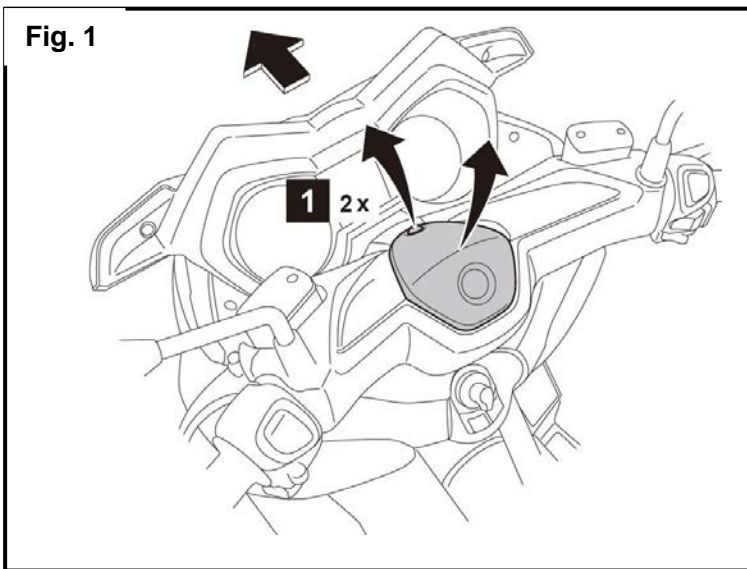
These instructions contain important information for future reference and *must* be given to the customer.

PARTS LIST:

No.	Part Number	Description	Qty
--	B74-F34A0-V0	Universal Stay Kit	--
①	*	Mount Base	1
②	*	Cover	1
③	*	M6x20mm Button Head Hex Bolt	2
④	*	Spring Nut	2
⑤	*	USB Converter	1
⑥	*	Y-Cable	1

* Part supplied with kit only and not available separately.





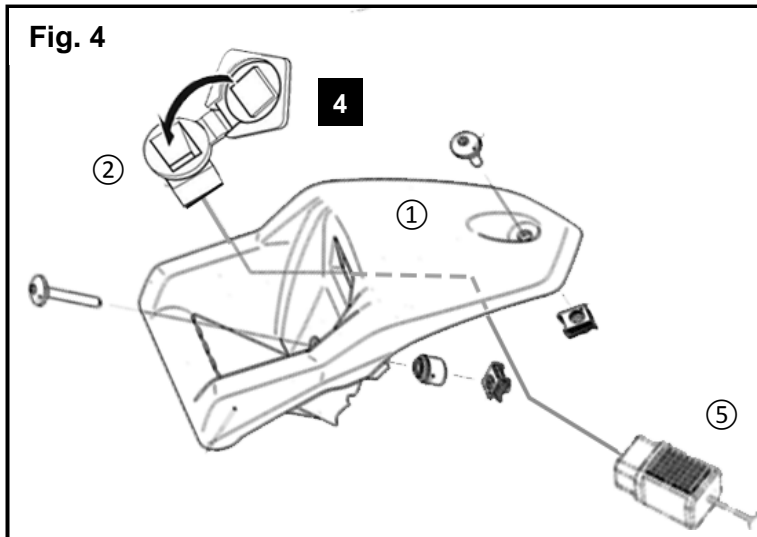
PREPARATION:

- Place the scooter on a flat, level surface on the center stand.
- Clean the mounting surfaces on these parts as needed during installation.

Note: Body panels have many snap attachment points. Work from the top down and gently pull the panel away from the scooter. The fit is precise and it will take some effort to free the panel from the scooter.

INSTALLATION:

- 1 Remove 2 stock screws that hold the stock cover and then remove the stock cover, see Fig. 1.
- 2 Remove the stock spring clip as shown in Fig. 2.
- 3 Install 2 (4) Spring Clips as shown in Fig. 3.
- 4 Install the (2) Cover into (1) Mount Base. Working from the backside of the Cover, press the USB Converter into the (2) Cover. Pull back the cover to allow the ridge on the USB to snap into the slot in the Cover. The lead from the USB will be connected in step 20. See Fig. 4.
- 5 Install Mount Base to handlebar. Thread the 2 M6x20mm Button Head Hex screws through the holes in the Mount and into the spring nuts as shown in Fig.5. Torque to 4Nm (3.0 lbf-ft).
- 6 Remove the stock button head screws on left and right side of the front fairing as shown in Fig. 6.
- 7 Remove one stock plastic rivet to free the left side cover. Retain rivet for reuse. See Fig. 6
- 8 Remove the front fairing. Remove the trim pieces that surround the mirrors by pulling on the outboard edges. See Fig. 6.
- 9 Disconnect the connector. See Fig. 7.
- 10 Push the cable bundle back away from clip.
- 11 Remove the rubber foot pad on the left side.
- 12 Remove the 2 screws that secure the lower fairing.
- 13 Remove the 2 plastic rivets from the lower fairing.
- 14 Remove the screw that secures the lower fairing as shown in Fig. 7.
- 15 Remove the 2 screws that hold the upper fairing to the body.
- 16 Remove the hex head bolt that secures the fairing to the body structure.



- 17** Remove the fairing from the scooter.
- 18** Disconnect the connector between the power outlet and the wire harness. See Fig. 8.
- 19** Plug the ⑥ Y-cable between the power outlet and wire harness as shown in Fig. 8.
- 20** Plug the ⑤ USB Power cord into the plug outlet of the ⑥ Y-Cable.

Install all the parts you removed. Note the torques shown in the figures and use them during reinstallation.

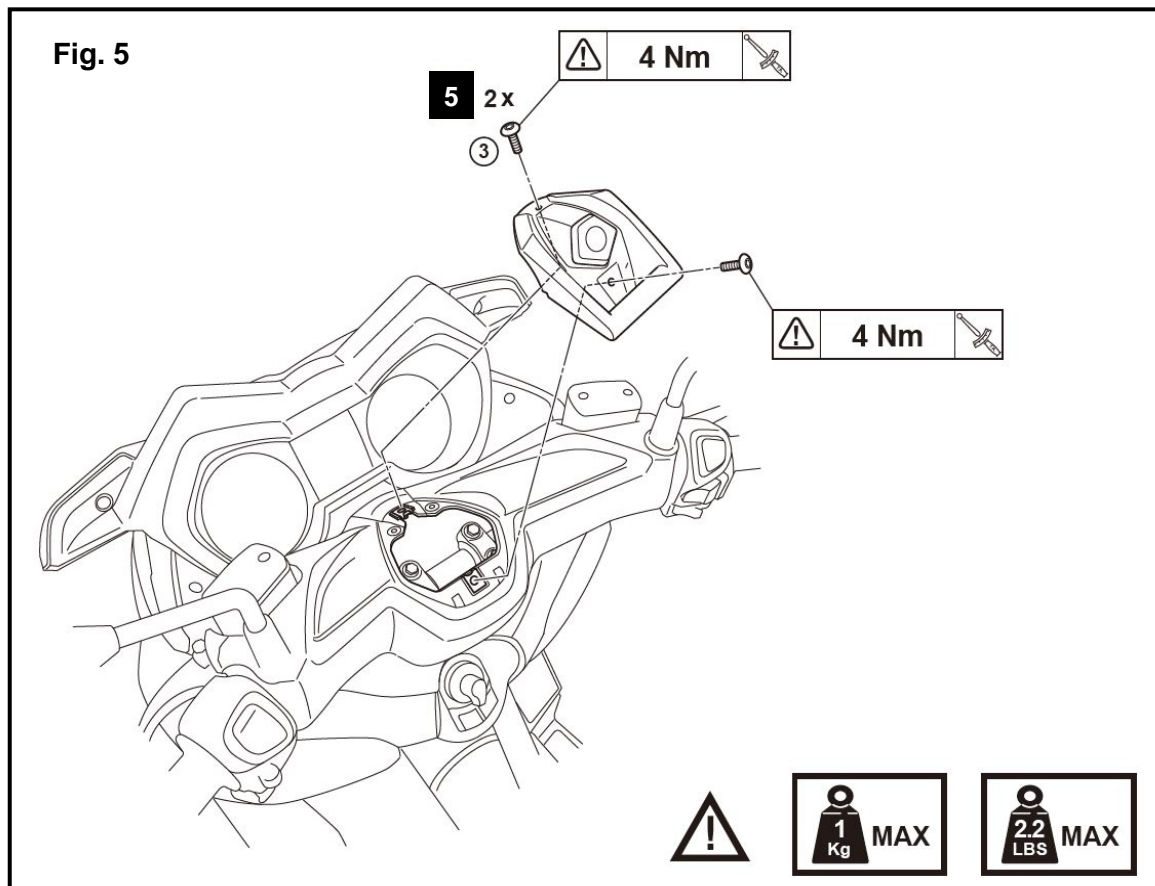


Fig. 6

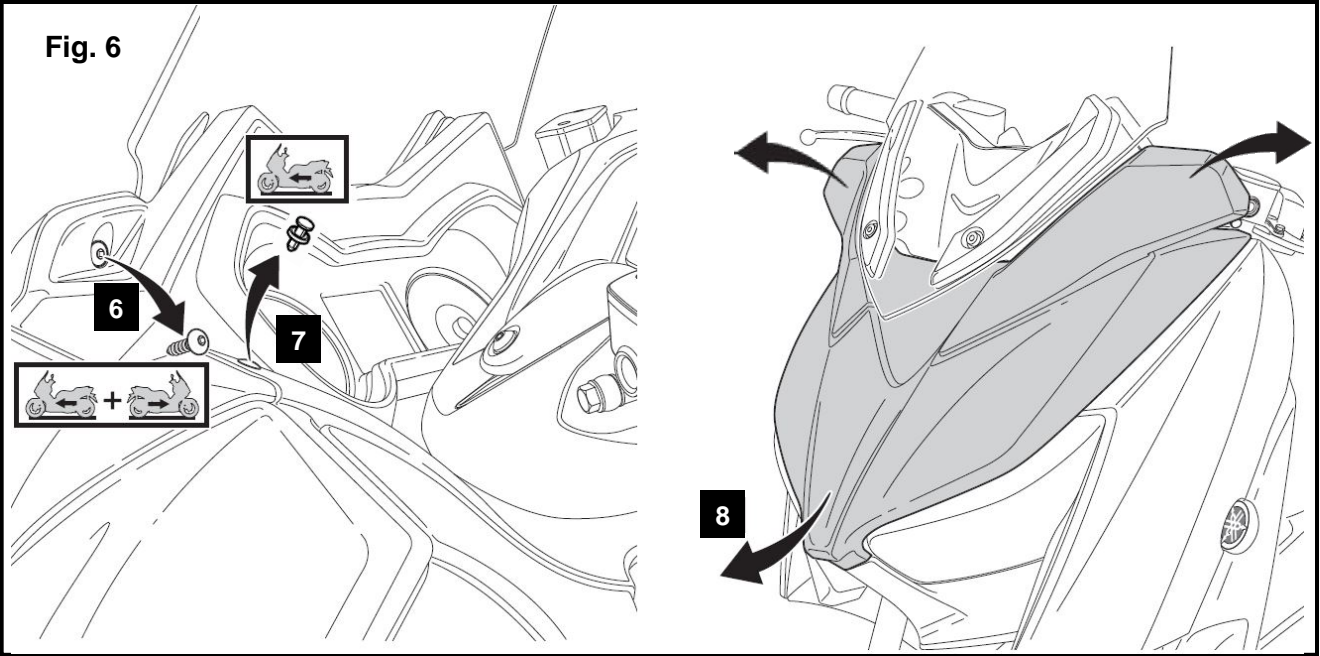
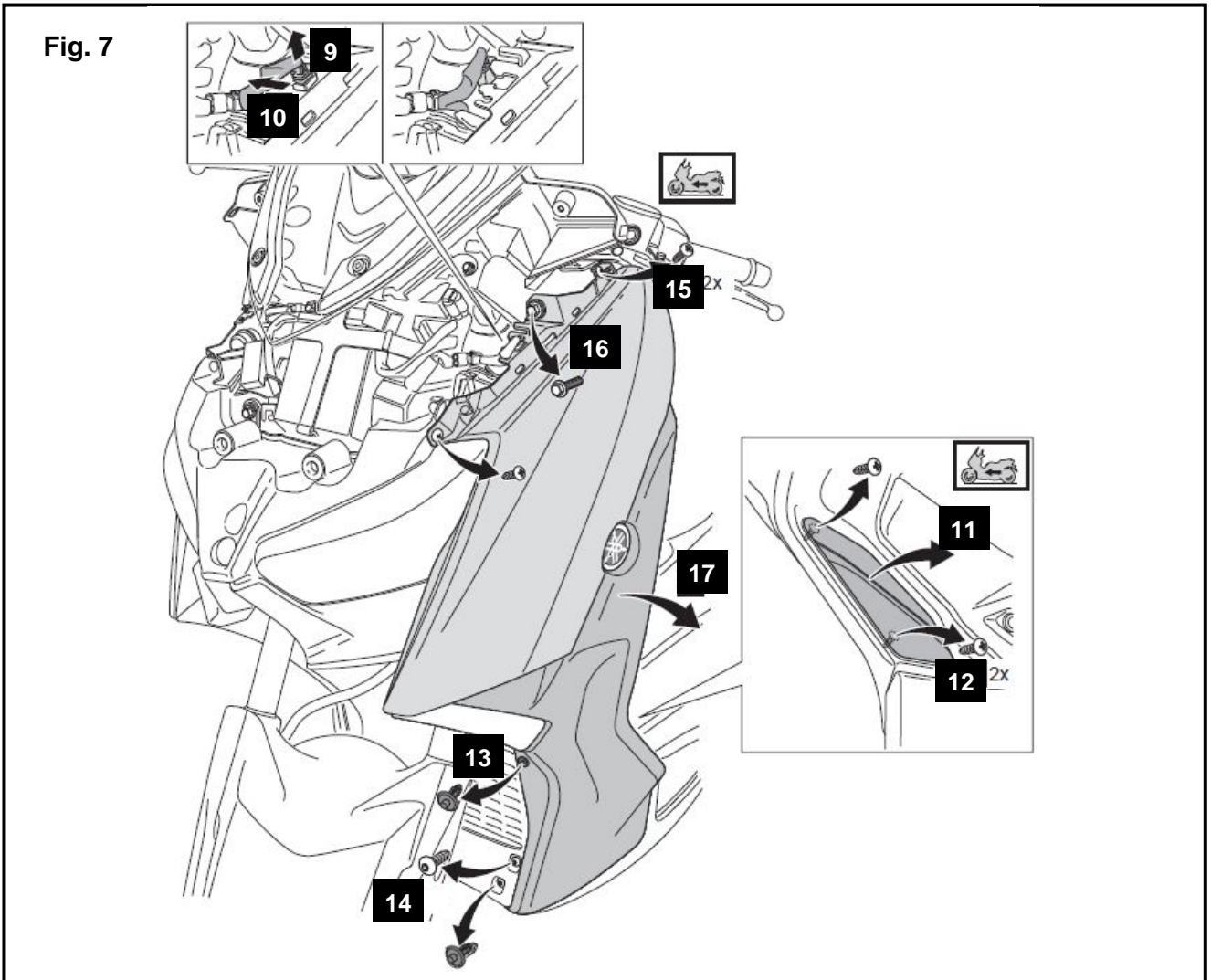
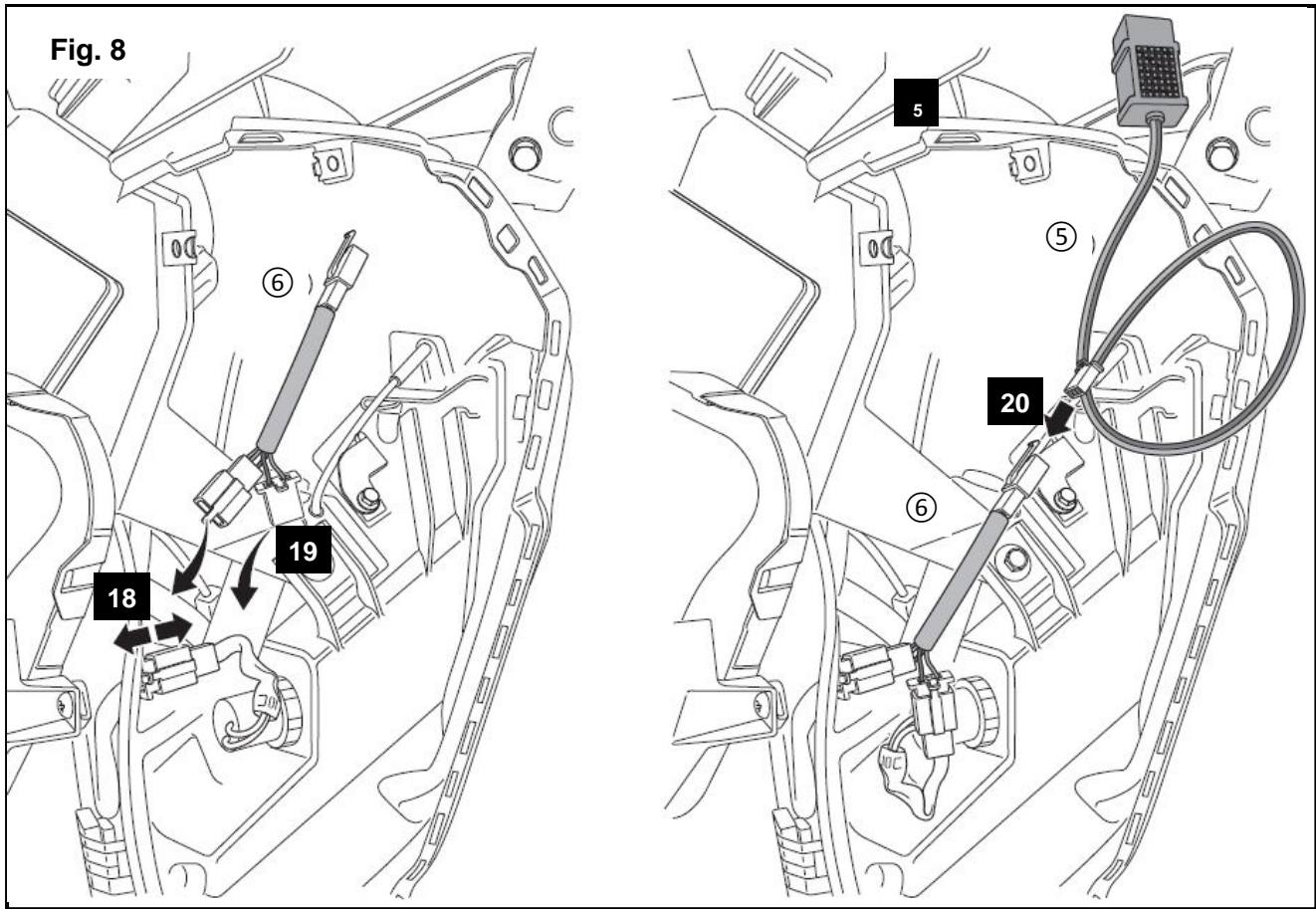


Fig. 7





MAINTENANCE:

Periodically, check torque on all hardware. If loose hardware is found, re-torque to specification.

CARE AND CLEANING:

Wash using a mild soap and water solution and soft cloth

CUSTOMER SERVICE:

For further information see your Yamaha dealer.

ESTIMATED TIME TO INSTALL: 0.3 HR